



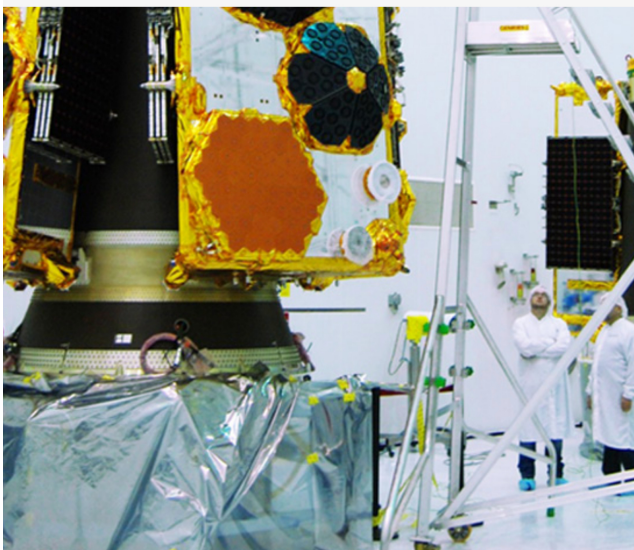
## Satellite Technology powered by The Globalstar Satellite Network

Globalstar strives to preserve a bond of excellence as a leading, global provider of reliable commercial satellite solutions used across our roads, waterways and remote applications throughout the world. Connectivity beyond the boundaries of cellular for business and personal communications extending peace of mind to those who work, live and adventure off the grid. Globalstar Satellite Solutions are powered by a proprietary network of satellites that are Always On, and Always Reliable.

### Our Technology

Globalstar's state-of-the-art technology connects people every day through reliable satellite communications over an exceptionally clear and secure satellite network. Globalstar satellites provide reliability and operability worldwide connecting users in areas where traditional networks are unreliable or unavailable. Its' satellite product portfolio equips the field with voice and data services, Commercial IoT and SPOT Business tracking and messaging products that serve a multitude of companies, workers and outdoor enthusiasts in remote business and pleasure applications.

Satellite Solutions improve communications and productivity by enabling the highest standard of lifesaving technology in the simple push of a button. Our two-way duplex, one-way Commercial IoT and SPOT products transmit more than 1.8 billion messages a year, tracking and monitoring assets, connecting IoT devices, and saving lives in over 100 countries and six continents. There have been nearly 7,500 rescues initiated worldwide thanks to SPOT and our lifesaving technology.



### Our System

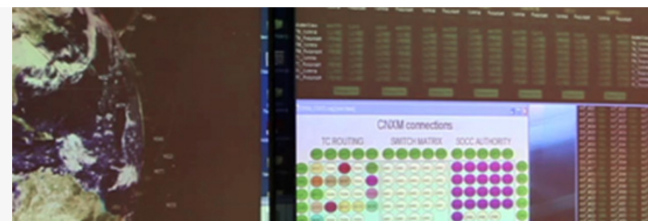
Like "bent-pipes" or mirrors in the sky, the Globalstar satellites pick up signals from over 80% of the Earth's surface. Our satellites transmit customer signals via CDMA technology to antennas at the appropriate terrestrial gateway, then the signals are routed through the local networks. This highly effective design offers the shortest connectivity latency and enables Globalstar to upgrade our system with the latest technology on the ground.

Globalstar's new satellite constellation of Low Earth Orbit (LEO) satellites and second generation ground infrastructure deliver exceptional quality, reliable coverage and high quality service to our customers.

Our patented satellite path and gateway diversity technologies allow customers to stay connected in the event of a single satellite failure by automatically transmitting to the next available satellite. This ensures uninterrupted communication in even the most suboptimal conditions like mountainous areas or urban canyons.

### The Globalstar Advantage

Globalstar's 24 ground stations serve as a bridge between LEO satellites and traditional communications infrastructure on six continents. This connection provides communications to over 120 countries throughout the world. The second generation



ground infrastructure is based on the Internet protocol multimedia subsystem (IMS) configuration to allow our engineers to continually adapt to changing user needs.

An all IP based and IMS solution uses an IP Multimedia Subsystem and facilitates the use of IP (Internet Protocol) for packet communications over wireless or landline. There are many advantages of the IP based IMS solution. Globalstar can offer richer and more features to customers, maximize use of satellite technology for optimal user experience, better mobile satellite service throughput for improved data connectivity delivering clear connections on the ground.



### Attractive Differentiators and State-of-the-Art New Products

Our strategically placed gateways offer local network access and national numbering plans. As opposed to other LEO systems that require expensive international dialing for all calls, our unique design allows us to offer the most attractive local dialing and pricing plans to our customers. This extreme reliability and affordable price point is what makes Globalstar different.

Globalstar service works well beyond terrestrial networks to provide peace of mind to the multitude of companies, workers and outdoor enthusiasts who work and play beyond the limits of intermittent or unavailable cellular coverage. We develop products with our customers in mind to ensure they are getting the highest quality products at an affordable price.

[Careers](#)

[Press Center](#)

[Investor Relations](#)

[Spectrum](#)  
[Media Contacts](#)

[Legal](#)

[Minerals Sourcing Policy](#)  
[Maria DB License](#)  
[Globalstar Patents](#)  
[Regulatory](#)  
[California MTS Surcharge](#)

[Partners](#)

[Locate a VAR](#)



Copyright © 2022 Globalstar®. All rights reserved.

[Privacy Policy](#), [CPNI Policy](#), [Service Agreement](#), [General Terms and Conditions](#), [Cookie Notice](#), [Cookies Settings](#)

All SPOT products described on this website are the products of Spot LLC, which is not affiliated in any manner with Spot Image of Toulouse, France or Spot Image Corporation of Chantilly, Virginia.

[Sales Chat](#)